



New Zealand Electricity Market Making Update

March 2020

Disclaimer

The presentation is derived from sources believed to be accurate and current. However, neither ASX nor ASX Directors, officers, agents, employees or contractors (“ASX Personnel”):

- a) give any or warranty as to the reliability, accuracy or completeness of the Content; or
- b) warrant that any of the Content will be error-free.

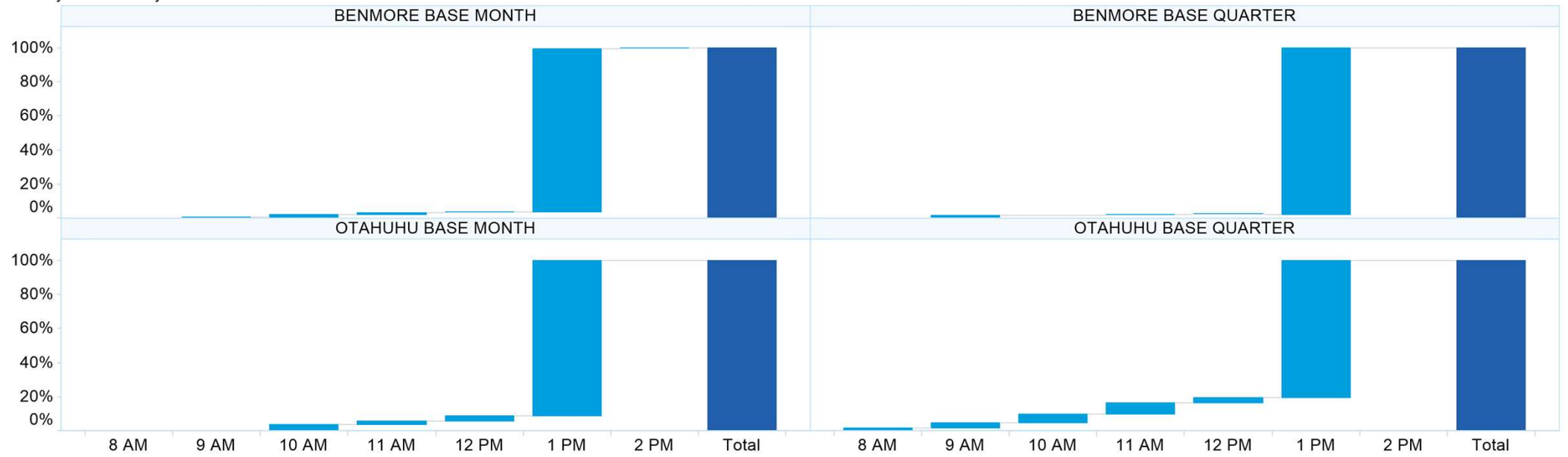
Neither ASX nor ASX Personnel shall be liable in any way for any loss or damage, howsoever arising (whether in negligence or otherwise) out of or in connection with the Content and/or any omissions from the Content, except where liability is made non-excludable by legislation.

In the case of goods or services supplied or offered by ASX or ASX Personnel, liability for breach of any implied warranty or condition which cannot be excluded is limited at ASX’s option to either:

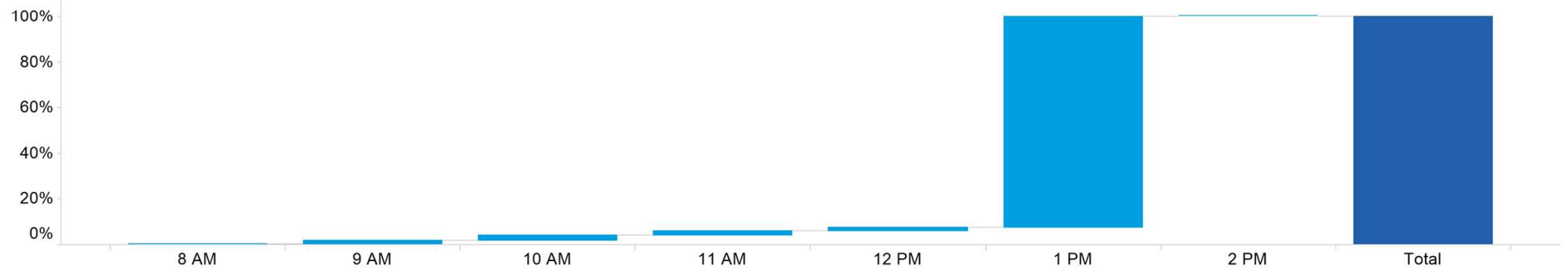
- a) the supply of the goods (or equivalent goods) or services again; or
- b) the payment of the cost of having the goods (or equivalent goods) or services supplied again.

1. NZ TOD Execution

Time of Day Execution by Product - March 2020

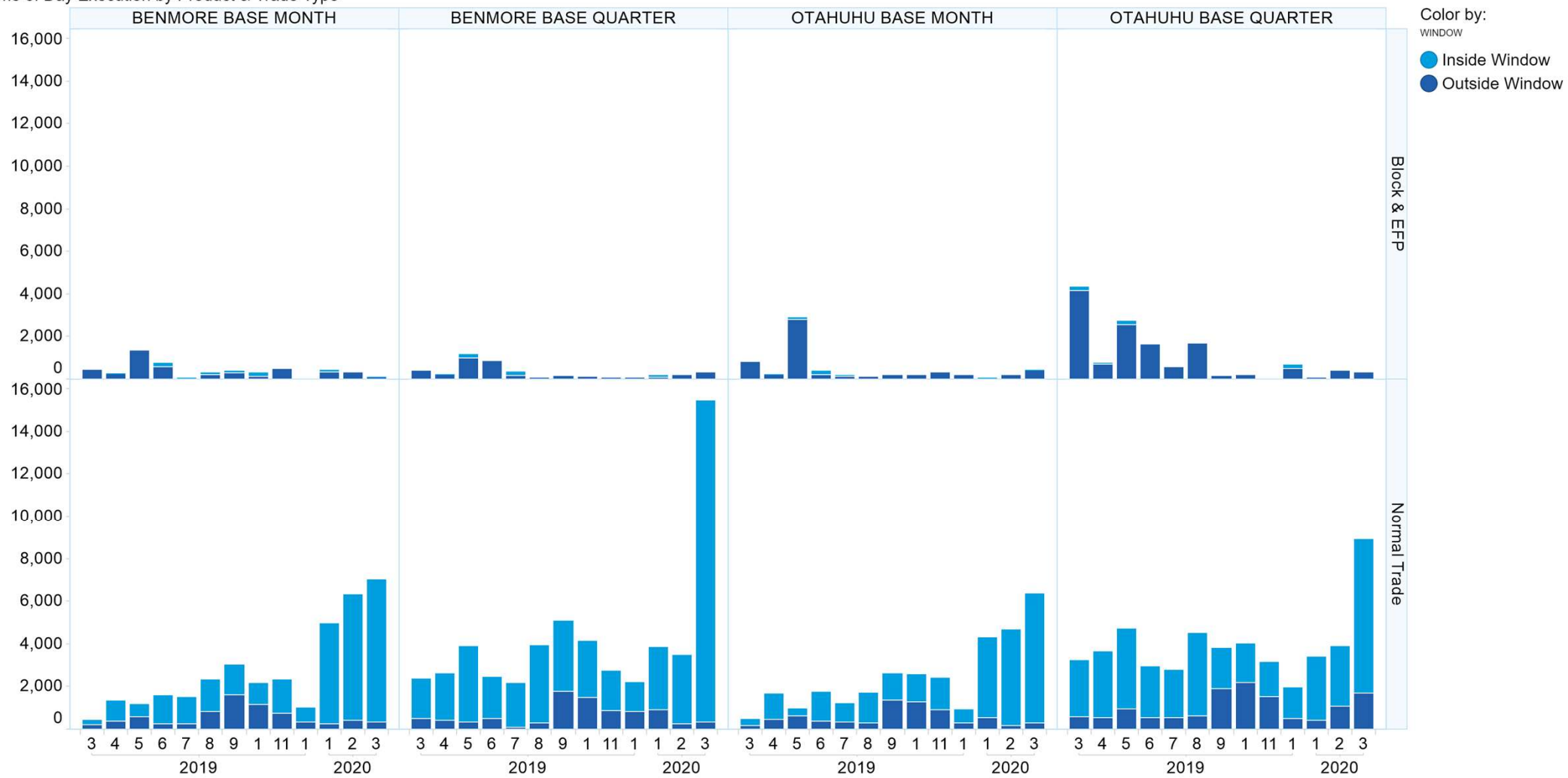


Time of Day Execution All - March 2020



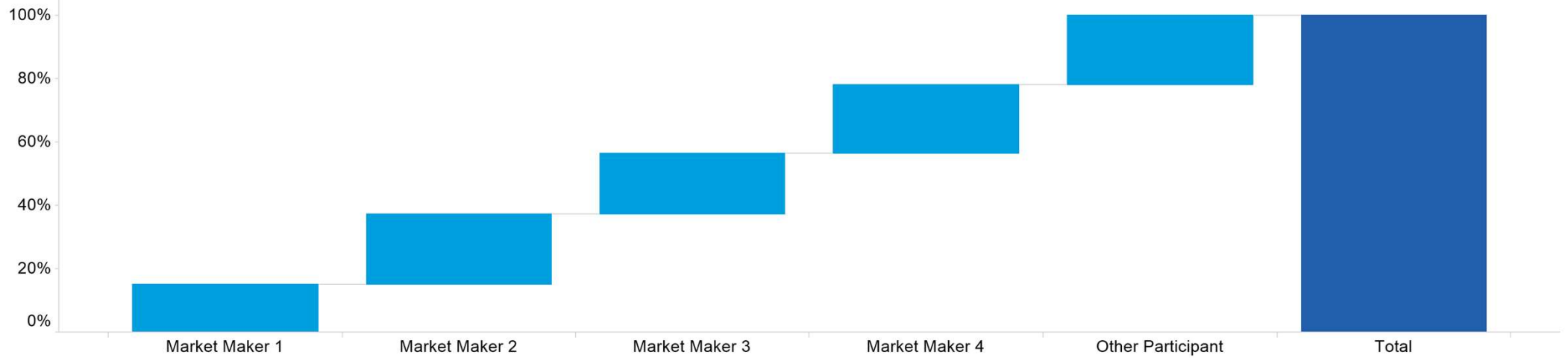
2. NZ TOD Comparison

Time of Day Execution by Product & Trade Type

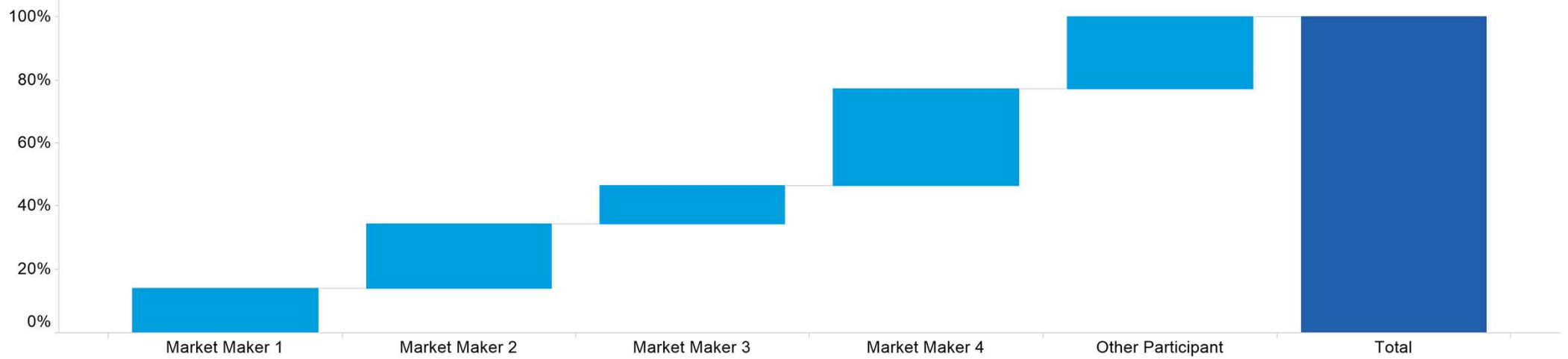


3. NZ MM Concentration

Market Maker Concentration (Buy Side) - March 2020

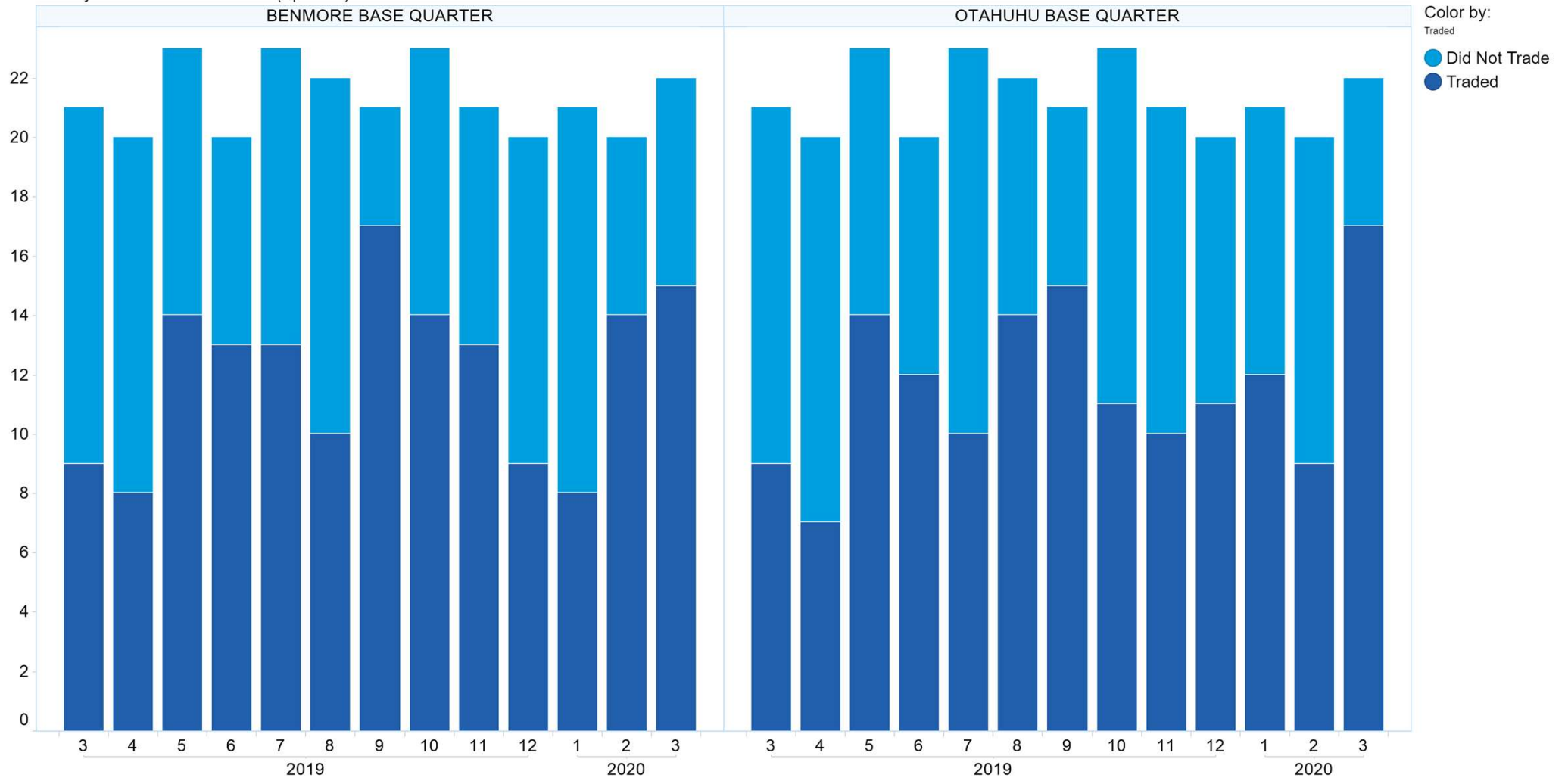


Market Maker Concentration (Sell Side) - March 2020



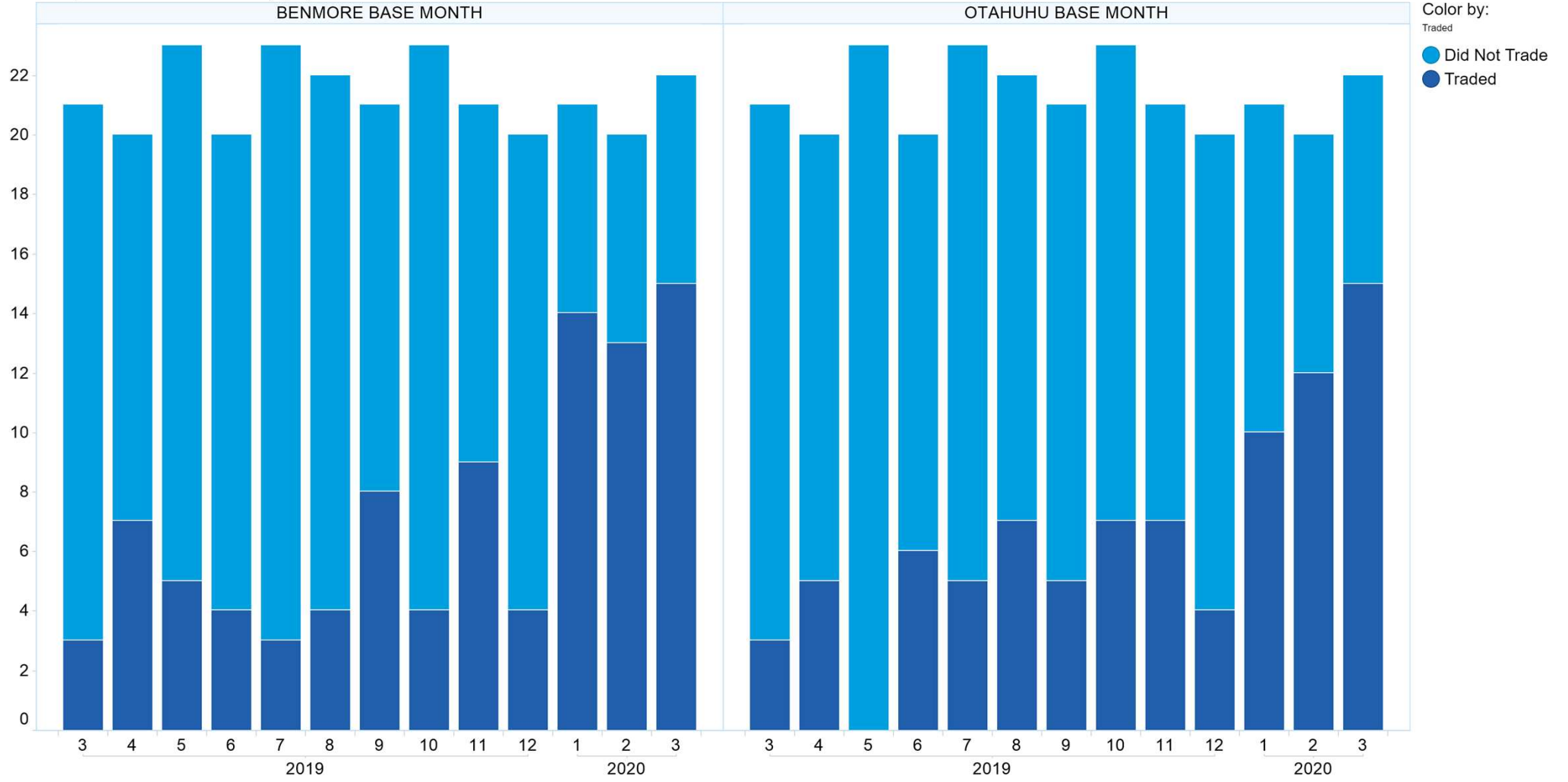
4. NZ Quarters Days Traded

Base Quarters Days Traded vs. Not Traded (Spot + 1)



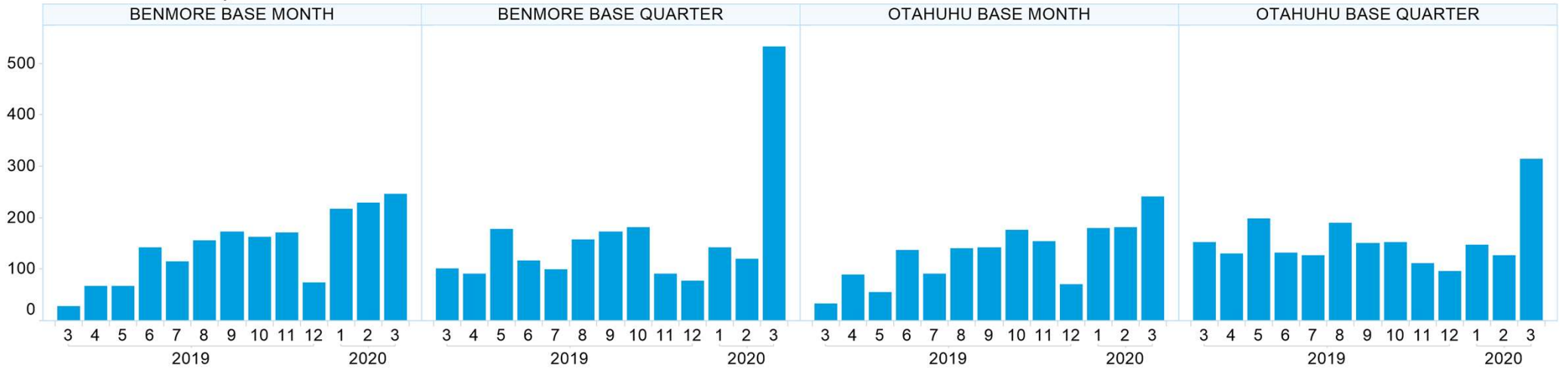
5. NZ Months Days Traded

Base Months Days Traded vs. Not Traded (Spot)

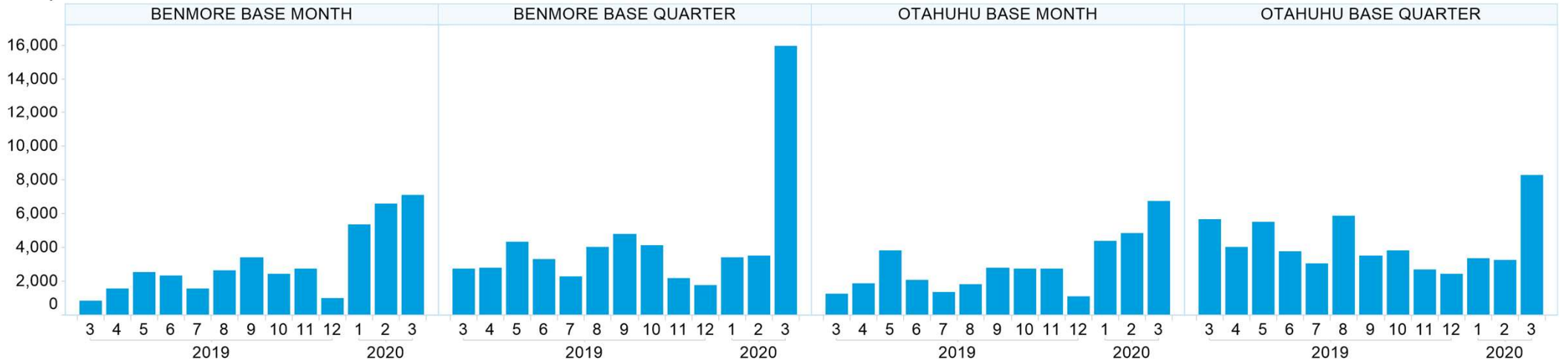


6. NZ Vol & Transaction Count

Number of Individual Transactions by Month



Volume by Month



7. NZ Pricing on Close

Two Way Pricing on the Close (True/False)

