

# **ASX SFTP**

## **EXTERNAL USER GUIDE**

Version 2.3 | July 2021

INFORMATION CLASSIFICATION - CONFIDENTIAL



## Table of Contents

Solution Overview.....	3
<b>Business Continuity Solution .....</b>	<b>3</b>
<b>User Manual Audience .....</b>	<b>3</b>
Requesting SFTP Access .....	4
<b>SFTP Accounts .....</b>	<b>4</b>
<b>Authentication – SSH Key Usage and IP Whitelist.....</b>	<b>5</b>
<b>Account Permissions .....</b>	<b>5</b>
<b>Simultaneous Login .....</b>	<b>5</b>
<b>Account Policies .....</b>	<b>5</b>
SFTP Folder Structures.....	6
<b>ETD Folder Structure .....</b>	<b>6</b>
<b>OTC Folder Structure.....</b>	<b>6</b>
<b>ASX Energy Data Centre Folder Structure.....</b>	<b>8</b>
<b>Warrant Management Interface Folder Structure .....</b>	<b>10</b>
<b>ASX Market Data Folder Structure.....</b>	<b>10</b>
<b>DataSphere Folder Structure .....</b>	<b>11</b>
<b>Reports Distribution Schedule .....</b>	<b>11</b>
Accessing Reports .....	12
Customer Firewall Configurations.....	12
Frequently Asked Questions .....	13
<b>Setting Up.....</b>	<b>13</b>
<b>Troubleshooting .....</b>	<b>13</b>
ASX SFTP Contacts .....	14
<b>Account set ups .....</b>	<b>14</b>
<b>Connectivity Issues.....</b>	<b>14</b>
<b>Report Queries .....</b>	<b>14</b>
Appendix 1 – Windows SFTP.....	15
<b>Generating an SSH key on Windows using PuTTY .....</b>	<b>15</b>
<b>Using PSFTP Commands to SFTP Files with Windows .....</b>	<b>17</b>



## Solution Overview

To facilitate the delivery of ASX generated files and reports to customers (ASX Participants and their clients), a Secure File Transfer Protocol (SFTP) service is available at ASX. Reports will need to be collected by the customer from the SFTP service.

SFTP provides end to end encryption of data between the SFTP client and server. Authentication to the SFTP server will require the creation of SSH keys that are registered in the SFTP server.

The production SFTP solution domain name is FTP.ASX.COM.AU

ASX also provides a replica solution for testing purposes which has a domain name of FTPTEST.ASX.COM.AU

## Business Continuity Solution

The ASX production SFTP solution has a replicated Business Continuity instance. The SFTP service has a single presentation of the domain name, meaning that ASX customers will not need to make any changes in the event of an ASX site issue.

It is the responsibility of the ASX customer to validate access from their primary and secondary sites and ensure that the SSH keys are configured correctly. Customers are also responsible for ensuring that access to the ASX SFTP is regularly tested.

## User Manual Audience

The ASX SFTP External User Guide intends to provide technical administrators of ASX customers the necessary details to connect to the ASX SFTP server to retrieve files. This includes the process for requesting access, account types and the generation of SSH keys.



## Requesting SFTP Access

ASX Customer Technical Support provides support for the SFTP service. Customers requesting access to the SFTP environment will be required to submit a completed SFTP account request form with a SSH Public key to ASX Customer Support at [cts@asx.com.au](mailto:cts@asx.com.au).

### SFTP Accounts

The naming convention utilised for SFTP accounts is:

- A three character customer code
- The ASX product/service

*Example: XYZ\_OTC or XYZ\_DBOR*

The following account types are available:

**Multiple Service Account** - This is a generic account to access multiple ASX services (e.g. both ASX OTC and ASX Clear Futures)

The naming convention utilised for this SFTP account will be a three character customer code followed by 'Download' (e.g. XYZ\_Download)

**Single Service Account** - This is an account to access a specific ASX service, i.e. specific accounts for when different business units require segregated access to particular ASX Services.

The naming convention utilised for this SFTP account will be a three character customer code followed by the product/service:

XYZ\_OTC – OTC Clearing Service

XYZ\_ETD – ASX Clear (Futures)

ASXENERGY\_XYZ – ASX Energy Reporting

XYZ\_DBOR – Daily Beneficial Ownership Reporting

XYZ\_WMI – Warrants Management Interface

XYZ\_MKTDATA – ASX Market Data (ITCH/MDP)

**Additional Accounts** - Multiple customer defined accounts can be requested for a particular service, i.e. accounts for automated processes and an account for an operational team to troubleshoot the service via an SFTP client.

Each connecting device (i.e. primary and backup server) will require an SSH key, however one account can have more than one SSH key. Alternately, more than one instance of a Multiple Service Account may be requested.

Additional information to be provided includes:

- The specific accounts IDs requiring configuration for additional services
- The SSH public key to account relationship where multiple public keys are provided.



## Authentication – SSH Key Usage and IP Whitelist

The SFTP service utilises SSH public and private key combinations for secure access. The requestor (ASX customer) generates the SSH key combination. The SSH private key is retained by the requestor and the public SSH key is provided to ASX. An SSH key combination can be utilised by more than one account. The key provides security for connection to the SFTP and removes the need to manually input a password. ASX requires the use of 2048-bit generated SSH-2 RSA keys.

For ASX customers to be able to download reports from the SFTP server, customers will need to provide ASX with their public key and public IP address in addition to the SFTP account username. Username does not need to be supplied when requesting a new account. ASX Customer Technical Support must be informed of any changes to public key or public IP address for an account.

OS X or Linux users can generate a key pair by utilising the “ssh – keygen” command. E.g., ssh – keygen – t dsa (example only).

Microsoft users can refer to the instructions set out in [Appendix 1](#) – Windows SFTP for key generation and usage guidelines.

## Account Permissions

Accounts provided to approved ASX customers will have the following access rights/permissions on the SFTP server:

- Download reports
- View their own folders
- Resume transfers

ASX customers will not be able to write files to or delete files from SFTP folders accessible to them.

## Simultaneous Login

Multiple simultaneous logins are limited to a maximum of five sessions per user. Subsequent attempts to login will be rejected once an account is currently logged in and in use.

## Account Policies

Accounts are configured to:

- Ban an attacker IP for a period of time when a number of unsuccessful attempts are detected. During this lock out, login can still be established from a different whitelisted source IP address.
- Be expired if they if it has been inactive for a period of 90 days. A customer may request for an account to be re-activated through ASX Customer Technical Support. Accounts that have been inactive for 3 months will be deleted.



## SFTP Folder Structures

The reports for each ASX service will be contained within a set structure for Customers (ASX Clear (Futures) Clearing Participants (OTC and / or Futures) and their Clients) to download. Readers of this manual should refer to the section or sections that are relevant to them

For further details on the reports contained within the folders, customers should refer to the relevant provided report specifications.

### ETD Folder Structure

#### ETD Clearing Participant Reports

The following structure will be accessible for the ETD Clearing Participants on the SFTP server:

- ETD\_REPORTS\_<Three character Clearing Participant entity code>
  - YYYYMMDD
    - ETD\_<frequency>\_[<source system if applicable>]\_<Three character Clearing Participant entity code>
    - ETD\_<frequency>\_[<source system if applicable>]\_\_CLIENT\_<Three character firm or client entity code>

Note: unlike the OTC structure, these files will not be zipped.

#### ETD Client Clearing Reports

For direct ETD Client reporting, the structure will be the same however reduced:

- ETD\_REPORTS\_<Three character client entity code>
  - YYYYMMDD
    - ETD\_<frequency>\_[<source system if applicable>]\_<Three character client entity code>

Note: unlike the OTC structure, these files will not be zipped.

### OTC Folder Structure

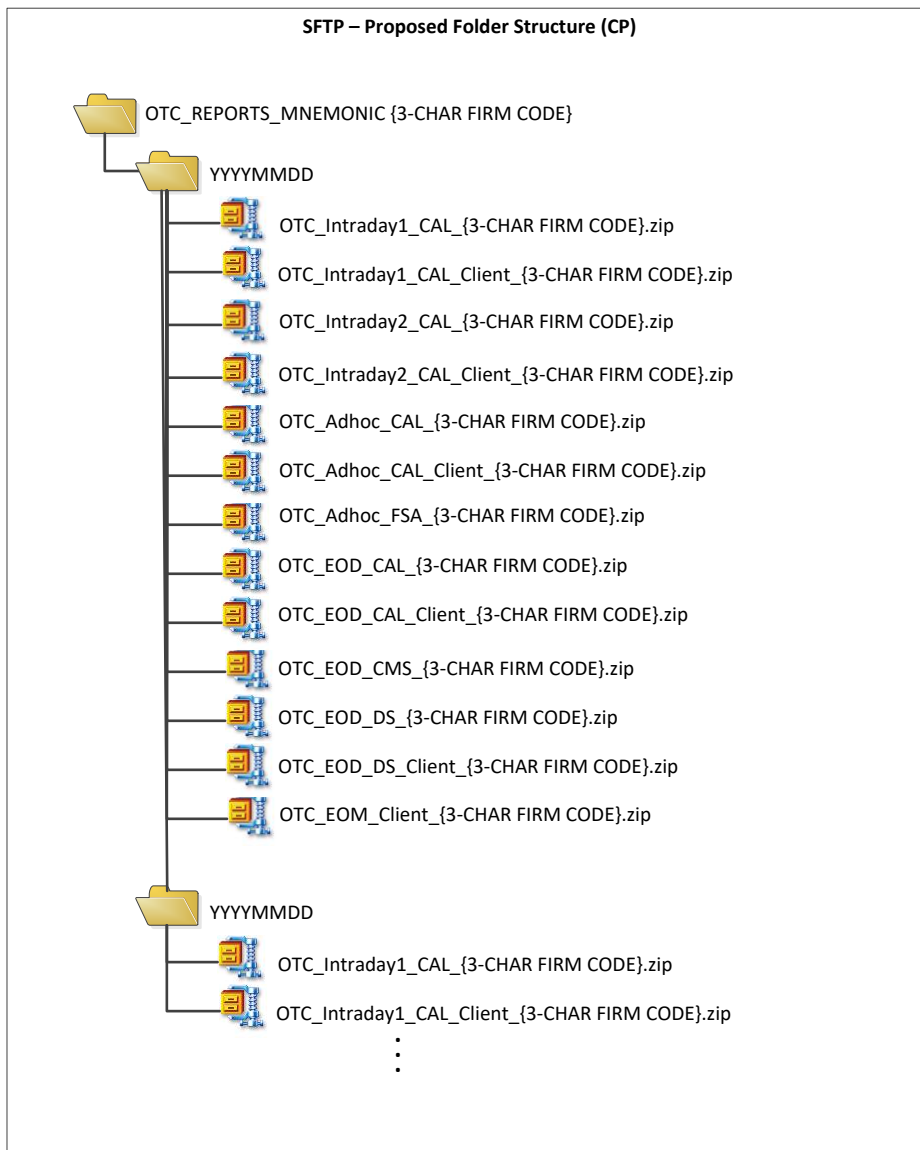
#### OTC Clearing Participant Reports

The following structure will be accessible for the OTC Clearing Participants on the SFTP server:

- OTC\_REPORTS\_<Three character Clearing Participant entity code>
  - YYYYMMDD
    - OTC\_<frequency>\_[<source system if applicable>]\_<Three character Clearing Participant entity code>.zip



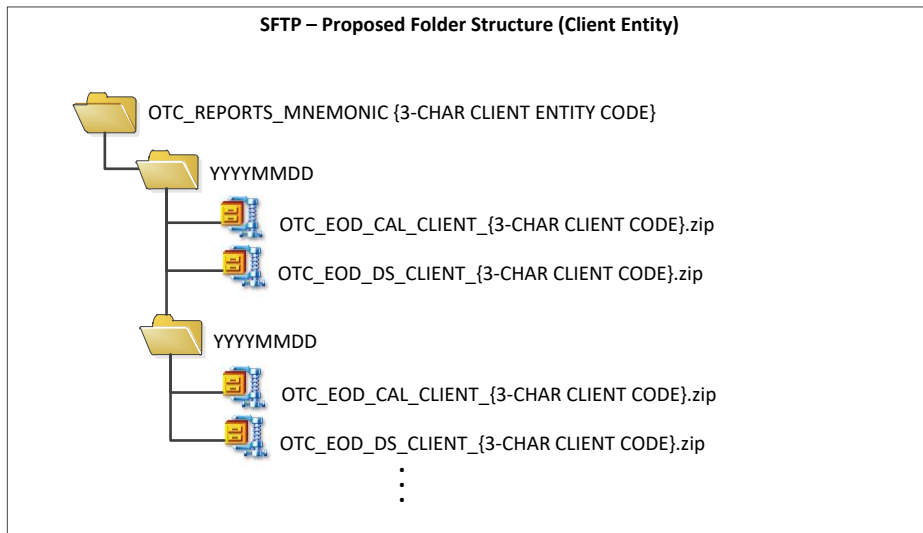
- OTC\_<frequency>\_[<source system if applicable>]\_CLIENT\_<Three character Clearing Participant entity code>.zip



### OTC Client Clearing Reports

For direct OTC Client reporting, the structure will be the same however reduced:

- OTC\_REPORTS\_<Three character client entity code>
  - YYYYMMDD
    - OTC\_<frequency>\_[<source system if applicable>]\_<Three character client entity code>.zip



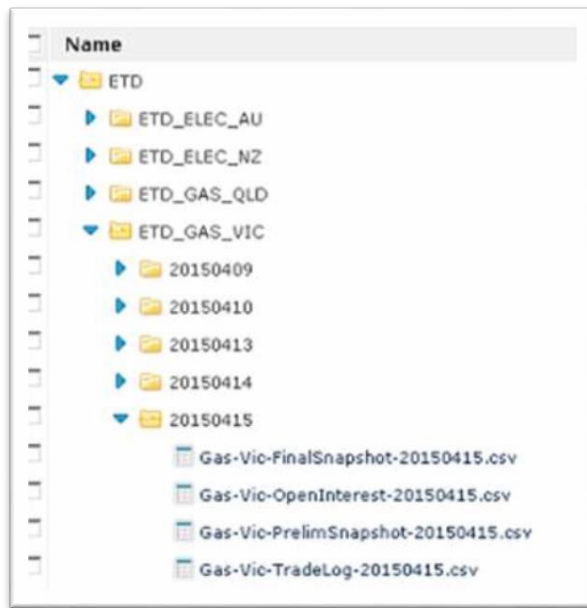
## ASX Energy Data Centre Folder Structure

### OTC Client Clearing Reports

There are two (2) report structures for ASX Energy Reports via SFTP.

The following structure will be accessible for the ETD ASX Energy Data Centre subscribers who have developed to a dated (YYYYMMDD) sub-folder structure on the SFTP server.

- ETD\_<Market>\_<Region>
  - YYYYMMDD
    - <Market>\_<Region>-PrelimSnapshot-YYYYMMDD.csv
    - <Market>\_<Region>-FinalSnapshot-YYYYMMDD.csv
    - <Market>\_<Region>-TradeLog-YYYYMMDD.csv
    - <Market>\_<Region>-OpenInterest-YYYYMMDD.csv



The following structure will be accessible for the ETD ASX Energy Data Centre subscribers who have developed to a non-dated sub-folder structure on the SFTP server.

- ETD\_<Market>\_<Region>\_Reports
  - <Market>\_<Region>-PrelimSnapshot-YYYYMMDD.csv
  - <Market>\_<Region>-FinalSnapshot-YYYYMMDD.csv
  - <Market>\_<Region>-TradeLog-YYYYMMDD.csv
  - <Market>\_<Region>-OpenInterest-YYYYMMDD.csv



## Warrant Management Interface Folder Structure

### Warrant Management Interface Reports

The following structure will be accessible for the Warrant Management Interface (WMI) Participants on the SFTP server:

- ARCHIVE
  - INPUT
    - CREATE\_SERIES\_<YYYYMMDD>\_<Three character Participant code>\_<Sequence>.csv
    - EDIT\_SERIES\_<YYYYMMDD>\_<Three character Participant code>\_<Sequence>.csv
  - OUTPUT
    - CREATE\_SERIES\_RECEIPT\_<YYYYMMDD>\_<Three character Participant code>\_<Sequence>.csv
    - EDIT\_SERIES\_RECEIPT\_<YYYYMMDD>\_<Three character Participant code>\_<Sequence>.csv
    - WARRANT\_CODES\_INTERIM\_<YYYYMMDD>.csv
    - WARRANT\_CODES\_FINAL\_<YYYYMMDD>.csv

## ASX Market Data Folder Structure

### ASX Trade Market Data

ASX Trade market data is divided at a partition level and provided on a daily basis:

- ItchInterface\_<Partition>\_<YYYYMMDD>.log.7za

### ASX 24 Market Data

ASX 24 market data is provided on a weekly basis:

- NTP\_<YYMMDD>\_<FileNumber>.zip



## DataSphere Folder Structure

Each folder structure is accessible for subscribers of a particular product. The sub-folder structures are identical across products.

- <product\_name>
  - <YYYYMMDD>
    - <product\_dataset\_name>-<YYYYMMDD>-<HHMMSS>.csv
  - Archive
    - <YYYYMMDD>
      - <product\_dataset\_name>-<YYYYMMDD>-<HHMMSS>.csv

## Reports Distribution Schedule

The distribution of reports will vary between services. Customer should refer to the service specific reporting specification to confirm the report distribution schedules.

## Accessing Reports

The ASX SFTP solution is standard. ASX customers can access the FTPTEST.ASX.COM.AU site from the command line or from any SFTP client that supports SSH connections.

Customers using UNIX or LINUX customers are able to utilise native SCP commands.

Microsoft environments do not natively support secure copy commands. Appendix 1 – Windows SFTP provides a guideline for copying files.

Alternate solutions to retrieving files are available to customers and it is the customer's responsibility to choose a solution appropriate to them and to licence appropriately.

## Customer Firewall Configurations

ASX customers connecting to the ASX SFTP solutions will need to allow the following configuration on their firewalls.

Environment	Domain Name	IP address	Port
Test (IWT)	FTPTEST.ASX.COM.AU	203.15.146.210	22
Production	FTP.ASX.COM.AU	203.15.145.110	22

ASX strongly recommends the use of domain name when accessing the SFTP instead of the IP address.



## Frequently Asked Questions

### Setting Up

#### **Can we use the same public keys for our Test and Production accounts?**

No, to ensure the controls are in place (at the CP and the ASX) that enforce separation of test and production data we require separate keys for the test and production environments.

#### **Can the ASX make a static folder for my files that doesn't change with the date?**

No, this is currently not feasible with the ASX SFTP solutions.

#### **Can I supply 1024 bit generated public keys?**

No, ASX enforces use of 2048 bit generated SSH-2 RSA keys.

#### **Do I need a particular Operating System to use SFTP?**

SFTP is a network protocol for secure file transfer. It does not depend on what OS is running on each side. Customers can access ASX SFTP server from any SFTP client that supports SSH connection, no matter it is running on Windows, Linux or other OS.

#### **Is the ASX SFTP solution available over existing ASX leased lines?**

No, the SFTP solution is currently only available via the internet.

### Troubleshooting

If you are experiencing issues with the ASX SFTP service, please see the below Frequently Asked Questions and if this does not help to resolve your query, please contact ASX Customer Technical Support [cts@asx.com.au](mailto:cts@asx.com.au) and provide as much detail as possible on the error messages you are receiving.

#### **I am unable to log in to SFTP due to Firewall issues**

Firewall settings will need to be configured with your network support administrator. See section 'Customer Firewall Configurations' for further details.

#### **I am able to log in but unable to access my reports**

Please ensure that the folder path name is correct – please see user guide for specific file names and refer to section 'SFTP Folder Structures'



## **I am no longer able to connect to ASX and download files error message “Connection Closed by remote host” or “Connection reset by peer”**

ASX has imposed restrictions on the server to limit multiple simultaneous attempts to access the folders by the same CP. This is particularly common during testing. This can result in an automatic ban on certain applications. Please contact ASX detailing the error message and we will assist.

The ASX SFTP solution is standard. ASX customers can access the FTPTEST.ASX.COM.AU site from the command line or from any SFTP client that supports SSH connections.

Customers using UNIX or LINUX customers are able to utilise native SCP commands.

Microsoft environments do not natively support secure copy commands. Appendix 1 – Windows SFTP provides a guideline for copying files.

## **ASX SFTP Contacts**

### **Account set ups**

ASX Customer Support provides support for the SFTP service. Customers requiring access to the SFTP environment will be required to submit an SFTP Account Request Form to:

#### **ASX Customer Technical Support**

Phone: +61 2 9227 0372

Email the completed form to [cts@asx.com.au](mailto:cts@asx.com.au)

### **Connectivity Issues**

If you are experiencing issues with establishing connectivity to your ASX SFTP folders, please contact ASX Customer Technical Support providing as many details as possible. Where possible and relevant, please provide specific error messages and logs.

### **Report Queries**

Queries regarding the ASX Clear Futures (OTC or ETD) reports that are available on the ASX SFTP service should be directed to:

#### **ASX Clearing Operations**

Phone: + 61 2 8298 8479

[asxclearfut@asx.com.au](mailto:asxclearfut@asx.com.au)



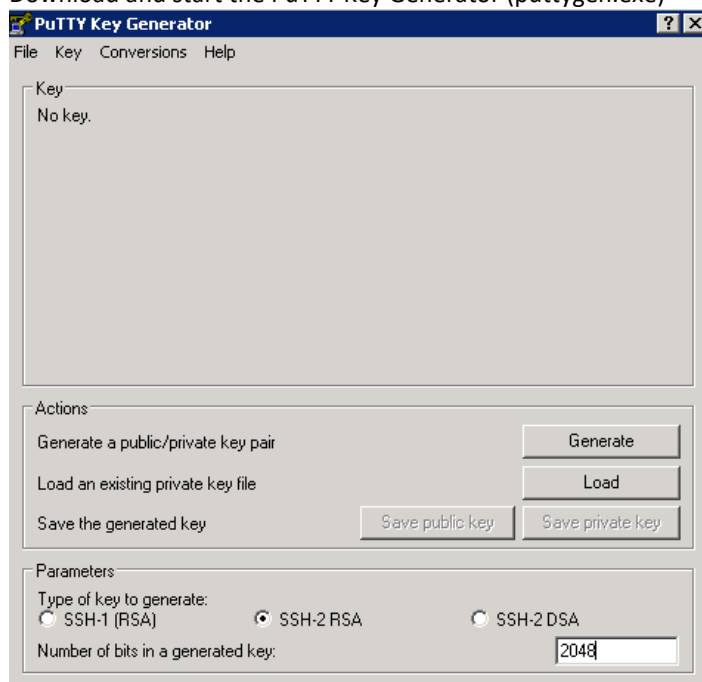
## Appendix 1 – Windows SFTP

This section provides details on the creation of private and public SSH keys as well as the retrieval of files from the ASX SFTP using Windows. Please note that there are alternate SFTP client solutions available and it is the customer's responsibility to choose a solution appropriate for them and to licence appropriately. The details below are provided as an example only. ASX will not provide support PuTTY utilities. PuTTY support calls should be directed to the vendor.

### Generating an SSH key on Windows using PuTTY

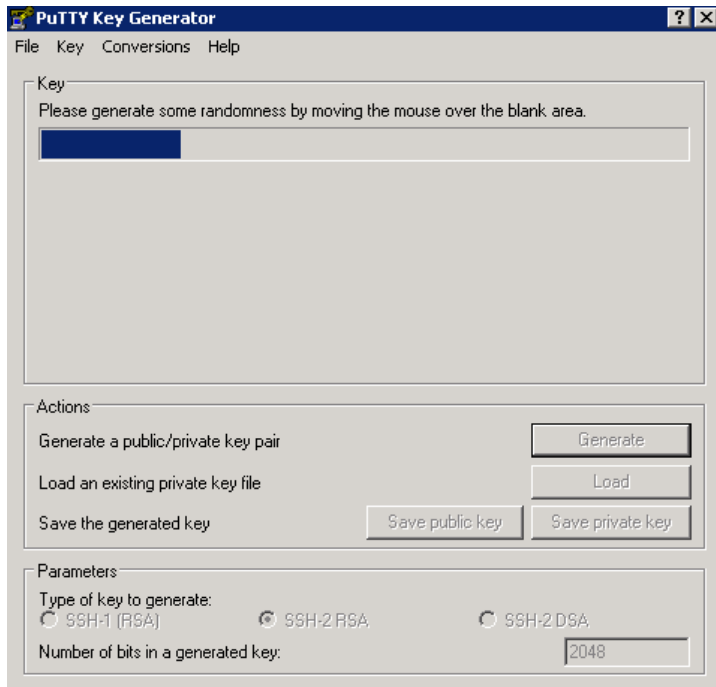
The following details are provided as an example only. ASX does not support the PuTTY utility and support calls should be directed to the vendor. Additional details regarding the tool can be found at [PuTTY](#).

1. Download and start the PuTTY Key Generator (puttygen.exe)

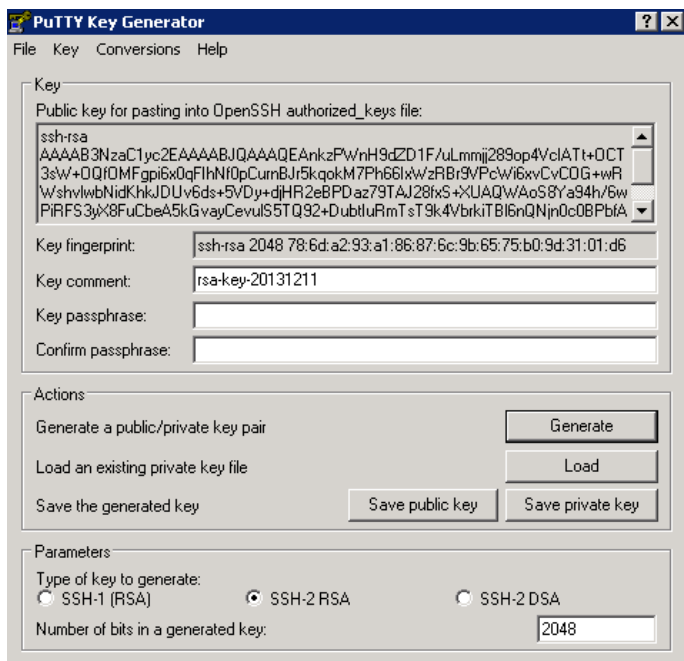


2. In the Parameters frame, select SSH2 RSA
3. Set the number of bits in a generated key to 2048
4. In the Actions frame, select Generate

5. You will then see a progress bar appear in the Key frame with a request to generate randomness. At this point you should move your mouse pointer around the blank area under the bar in the Key frame to generate the key pairs.



6. Fill in the Key comment field with something that you can use to identify the key. This is particularly helpful when you have multiple keys.



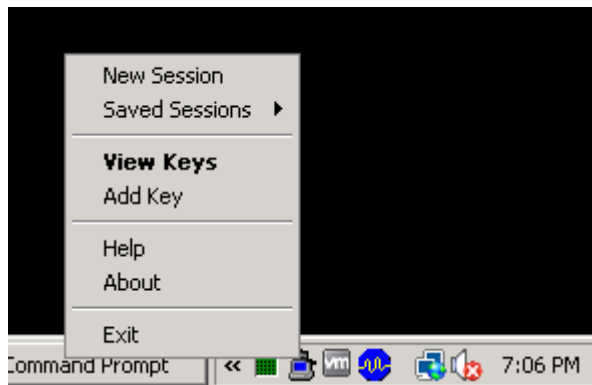
7. The Key passphrase fields are optional to fill in. The passphrase is used to protect your key, however you will be asked for it when you connect via SSH.

8. Click Save private key to save your private key
9. Click Save public key to save your public key
10. Provide the public key to ASX Customer Technical Support

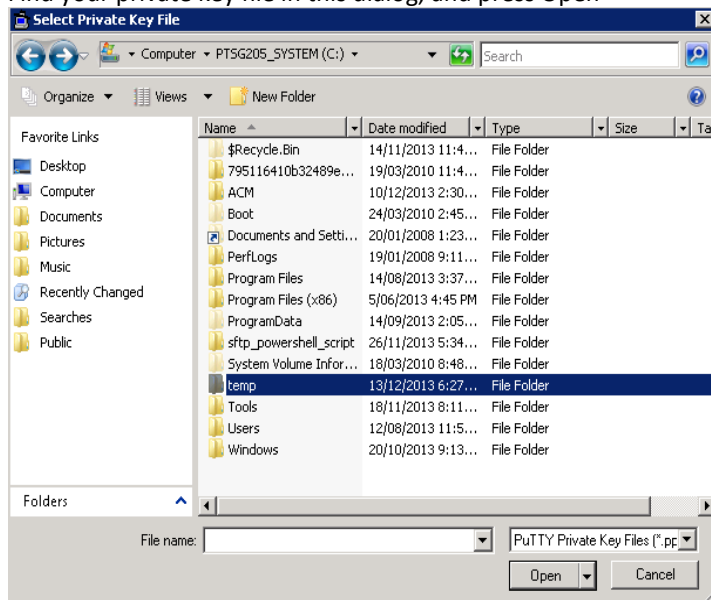
## Using PSFTP Commands to SFTP Files with Windows

To download reports from the ASX SFTP server via Windows:

1. Download Pegeant (SSH authentication agent) and PSFTP (SFTP client) from the [PuTTY website](#).
2. Start Pegeant.exe. A Pegeant icon will appear on the system tray.



3. Right click the icon and select Add Key. PuTTY will bring up a file dialog, labelled "Select Private Key File".
4. Find your private key file in this dialog, and press Open



5. Right click the Pegeant icon and select View Key. The selected private key is displayed
6. Start psftp.exe. A PSFTP command window will be launched.

7. psftp > open ftptest.asx.com.au ---- open a connection to ASX SFTP server
8. For the first time connection PSFTP will ask if you trust the host and add the rsa2 key to cache. Enter "y".

```

D:\Program Files (x86)\PuTTY\psftp.exe
psftp: no hostname specified; use "open host.name" to connect
psftp> open qmft201
login as: CCC_Download
The server's host key is not cached in the registry. You
have no guarantee that the server is the computer you
think it is.
The server's rsa2 key fingerprint is:
ssh-rsa 1024 ed:c5:07:36:08:f2:71:43:f3:33:bc:6c:35:9c:4a:3e
If you trust this host, enter "y" to add the key to
PuTTY's cache and carry on connecting.
If you want to carry on connecting just once, without
adding the key to the cache, enter "n".
If you do not trust this host, press Return to abandon the
connection.
Store key in cache? (y/n) y_

```

9. Enter username
10. psftp > ls ---- list directories in remote server
11. psftp > cd 20131213 ---- change directory to where the file copy from e.g., 20131213
12. psftp > ls ---- list files under directory
13. psftp > lcd c:\temp ---- change local working directory to where the file copy to e.g., c:\temp
14. psftp > get OTC\_Daily\_CCC.zip ---- copy the zip file e.g., OTC\_Daily\_CCC.zip from remote server
15. psftp > quit ---- terminate the session

```

D:\Program Files (x86)\PuTTY\psftp.exe
psftp: no hostname specified; use "open host.name" to connect
psftp> open QMFT201
login as: CCC_Download
Using username "CCC_Download".
Further authentication required.
CCC_Download@QMFT201's password:
Remote working directory is /
psftp> ls
Listing directory /
drwxrwxrwx 1 0 0 0 Dec 13 18:17 .
drwxrwxrwx 1 0 0 0 Dec 13 18:17 ..
drwxrwxrwx 1 0 0 1 Dec 13 16:22 20131213
psftp> cd 20131213
Remote directory is now /20131213
psftp> ls
Listing directory /20131213
drwxrwxrwx 1 0 0 0 Dec 13 18:18 .
drwxrwxrwx 1 0 0 0 Dec 13 18:18 ..
-rwxrwxrwx 1 0 0 166 Dec 13 16:22 OTC_Daily_CCC.zip
psftp> lcd c:\temp
New local directory is c:\temp
psftp> ~

```

The trademarks listed below are trademarks of ASX. Where a mark is indicated as registered it is registered in Australia and may also be registered in other countries. Nothing contained in this document should be construed as being any licence or right to use of any trademark contained within the document. ASX® Limited

